



Guangzhou Jiabaolai Trading Co., Ltd.

automobile-sparepart.com

广州嘉宝来贸易有限公司

Guangzhou Jiabaolai Trading Co., Ltd.



16210-70090 Cooling Fan Clutch For Automobile Spare Parts

Our Product Introduction

Basic Information

- Place of Origin: CHINA
- Brand Name: NABO
- Certification: TS16949
- Model Number: 16210-70090
- Packaging Details: poly bag or air bubble bag, any boxes with customers' label, Corrugated box , Standard tray
- Delivery Time: 3-35 days
- Payment Terms: D/P, L/C, T/T



Product Specification

- Product Name: Cooling Fan Clutch
- Size: Standard
- Warranty: 12 Months
- Highlight: **Automobile Spare Parts Fan Clutch ,
Automobile Spare Parts**



For more products please visit us on automobile-sparepart.com

Product Description

Product Description:

About the Cooling Fan Clutch

The cooling fan clutch plays a crucial role in a vehicle's cooling system. It serves as an intermediary that is normally positioned in the space that separates the engine from the radiator. Its main function is to control the operation of the fan blades that aid in cooling the engine.

Construction of the Cooling Fan Clutch

The clutch assembly exhibits a sophisticated design. At its core, the clutch houses a bi-metallic coil spring that responds to changes in temperature. This spring is engineered to be highly reactive to thermal variations, ensuring that the fan operates effectively under different engine heat conditions.

Operation of the Cooling Fan Clutch

In addition to the bi-metallic coil spring, a thermal sensor integrated within the clutch contributes to its precise functioning. This sensor plays the role of detecting the exact temperature around the engine area and is instrumental in regulating the engagement or disengagement of the fan.

Moreover, the clutch mechanism utilizes a viscous fluid coupling. This component is responsible for providing the necessary resistance or smoothness in the fan's movement, depending on the required cooling effect. The synergy between the coil spring, the thermal sensor, and the viscous fluid coupling ensures that the cooling fan operates optimally for the vehicle's needs.

Features:

Fan Clutch Features

Temperature Control

Our fan clutch is integrated with a high-precision thermal sensor that adeptly gauges the temperature of the engine coolant. This technology empowers the clutch to activate or deactivate at just the right times, providing an ideal balance between peak cooling efficiency and minimized power expenditure.

Enhanced Cooling Efficiency

Engineered with a sturdy framework and cutting-edge innovations, our fan clutch is designed to bolster the flow of air traversing the radiator. Enhanced airflow is key to effectively dissipating heat, averting overheating of the engine, and sustaining it within the optimal temperature range for operation.

Durable Construction

We commit to superior quality materials paired with meticulous manufacturing practices to guarantee our fan clutch's resilience and endurance. Built to tackle the rigors of daily usage, fluctuating extremes of temperature, and other severe conditions, our clutch promises consistent, dependable functionality even over prolonged usage.

Smooth and Quiet Operation

The engineering behind our fan clutch ensures that it operates with a smoothness and quietude that dramatically reduce vibrations and ambient noise. This commitment to subtlety significantly elevates the overall driving experience, ensuring that each journey is as serene as it is comfortable.

Engineered for Performance

Diligently devised to enhance your vehicle's cooling system, our fan clutch is a key component in boosting radiator efficiency. It aids in maintaining favorable engine conditions and safeguards against potential damage that could result from excessive heat buildup.

Applications:

The Function of a Cooling Fan Clutch in Automotive Engines

An integral component of a vehicle's cooling system is the **cooling fan clutch**. This device plays a pivotal role in the thermal management of automotive engines. Its main function is to engage or disengage the engine cooling fan depending on the cooling requirements of the engine at any given time.

Regulating Fan Speed

The cooling fan clutch has the responsibility of controlling the fan's speed. It ensures that the fan operates at optimal speeds that align with the engine's current temperature. By doing so, it helps maintain the engine's temperature within its ideal operating range, thus safeguarding the engine from overheating and promoting efficient fuel consumption.

Operation Based on Cooling Demands

As the engine's thermal demands fluctuate during operation, the cooling fan clutch reacts accordingly. It engages the fan when the engine temperature exceeds a predetermined threshold and disengages it when the temperature drops, reducing drag on the engine and conserving energy. This judicious control of the cooling fan contributes to the overall efficiency and longevity of the engine.

FAQ:

1. Who are we?

We are based in Guangzhou, China, start from 2018, we are specilizing in all kinds of spare parts for Japanese cars and Korean cars, for example, engine parts, suspension parts,electric parts, steering parts,transmission parts, body parts. . .

2. How can we guarantee quality?

Always a pre-production sample before mass production;
Always final inspection before shipment.

3. Why should you buy from us from other suppliers?

We have experience in spare parts for more than 10+years
A large of stock

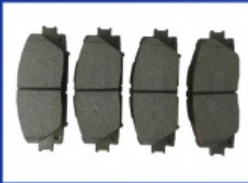
Professional export company
Accept small order
We can design anything well according to customers' requirement

PRODUCT SPECIFICATIONS



MAIN PRODUCT

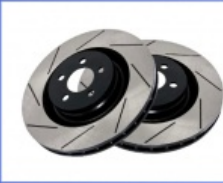
BRAKE SYSTEM



Brake Pad



Brake Shoe



Brake Disc



Brake Repair Kit



Brake Booster



Brake Cable



Brake Master
Cylinder



Brake Slave
Cylinder

TRANSMISSION SYSTEM



Drive Shaft



Propeller Shaft



Wheel Hub Bearing



Cv Joint



Clutch Set



Clutch Master
Cylinder



Clutch Release
Bearing



Universal Joint

SUSPENSION SYSTEM



Shock Absorber



Shock Absorber Spring



Strut Mount



Tie Rod End



Bushing



Control Arm



Ball Joint



Rack End

STEERING SYSTEM



Power Steering Rack



Power Steering Pump



Steering Knuckle



Steering Column Shaft



Steering Gear Boots



Oil Control Valve



Oil seal



Steering Hose



Guangzhou Jiabaolai Trading Co., Ltd.



+8613260773907



570987401@qq.com



automobile-sparepart.com

No.40, Qixinggang Road, Junhe Street, Baiyun District, Guangzhou, Guangdong, China